

CDBG-DR Program Overview



LEXINGTON COUNTY COUNCIL
JUNE 28TH, 2016

County of Lexington, SC -
Community Development Department
212 S. Lake Drive, Suite 401
Lexington SC 29072

803-785-8121

disasterrecovery@lex-co.com

www.lex-co.com

Introduction



- Erich Chatham is Managing Partner of Civitas LLC
- Based in Charleston, SC
- HUD Program Consultant - 10 years
- HUD Trainer for CDBG-DR & DRGR System – 6 years
- HUD Assigned TA provider for SC & TX program
- Clients all over South Carolina and the country
- Worked with State of LA after Hurricanes Katrina & Rita as well as New York after Hurricane Sandy
- Working with County staff since April 2015

Federal Notice PL 114-113



- Published June 17th
- Effective Date June 22nd
- Total of \$299,000,000 awarded in SC & TX
- Plus \$1,000,000 for HUD TA and Planning
- Provides \$16,332,000 to Lexington County

Federal Regulations



- Eligible Activities
- 70% Low-Income Set-Aside
- Maximum of 5% of funds for Program Administration
- Maximum of 15% of funds for Planning
- Serves Unmet Needs (remaining storm damage)
- Recovery & Resiliency Measures
- Citizen Participation
- Record Keeping & Reporting

Eligible Activities



- **Housing**
 - Rehabilitation
 - Buy-outs
 - Rehabilitation
 - Redevelopment/New Construction
- **Public Infrastructure & Facilities**
 - Roads
 - Bridges
 - Facilities
- **Public Services**
 - Housing Counseling
 - Special Needs Services
 - Transportation
- **Economic Development**
 - Business Assistance
 - Job Creation

70% Low-Moderate Income Set-Aside (LMI)



Low-Moderate Income = household income less than or equal to 80% Area Median Income (AMI)

70 % = \$11,432,400.00

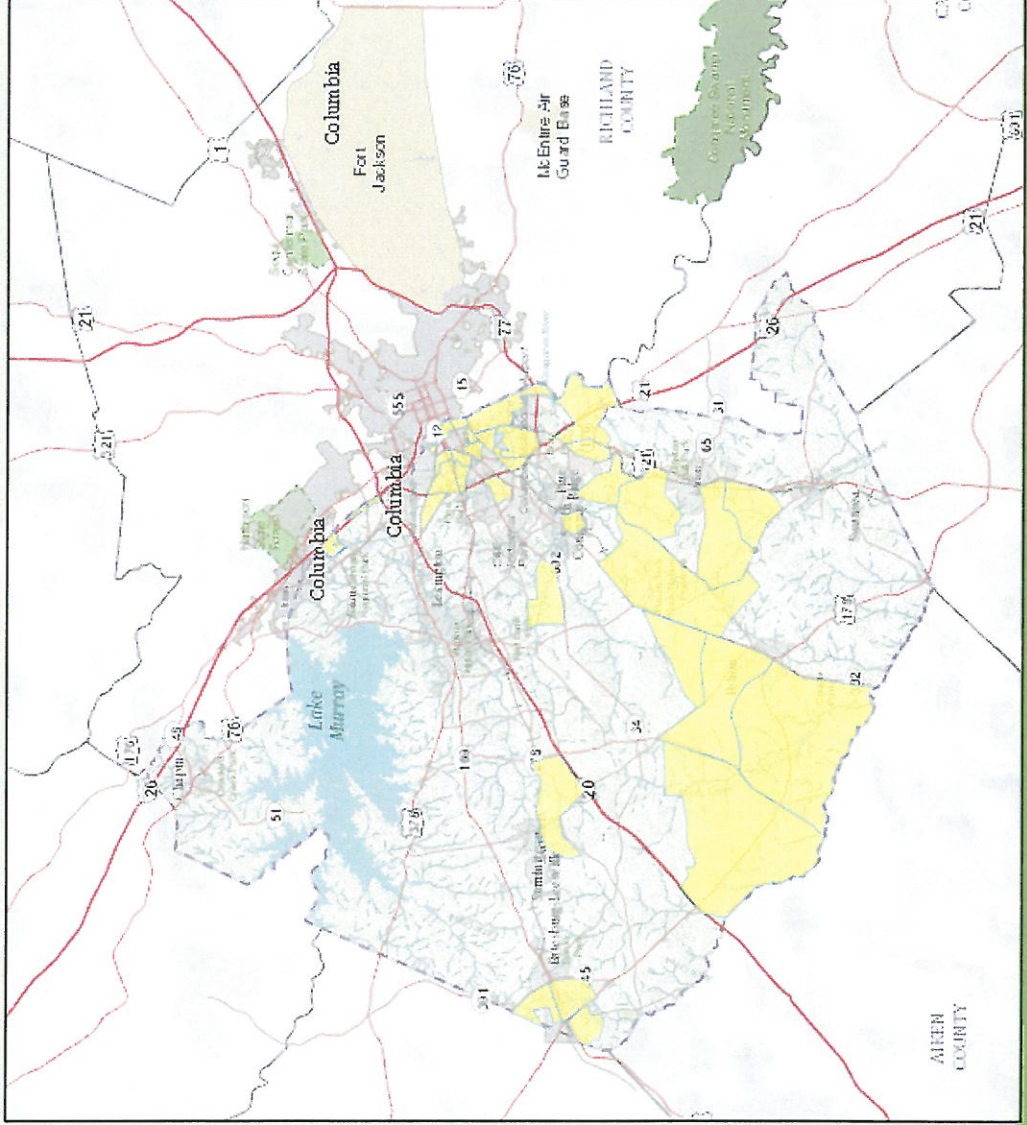
AMI	1 Person	2 Person	3 Person	4 Person	5 Person	6 Person	7 Person	8 Person
80%	\$35,950	\$41,050	\$46,200	\$51,300	\$55,450	\$59,550	\$63,650	\$67,750

Meeting 70% LMI Set-Aside

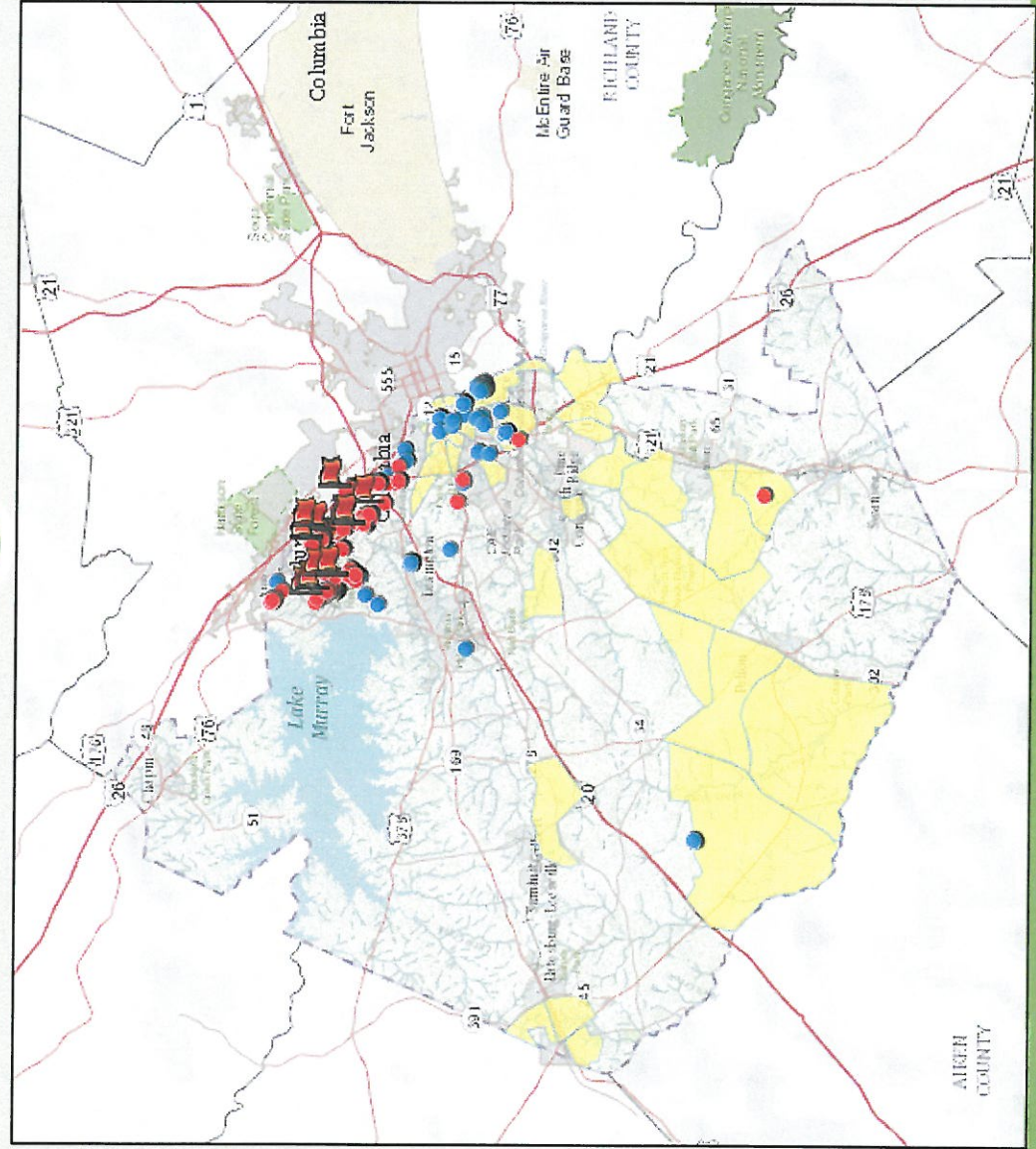


- **Area Benefit**
 - HUD Designated LMI Census Tract Block Group
 - 51% of Households at or below 80% AMI
 - Examples: infrastructure or public facilities improvements i.e. roads, bridges, parks, community centers
- **Direct Benefit to LMI Household**
 - Income Certification for Households Served
 - Must be at or below 80% AMI
 - Examples: housing rehab, elevation of housing, buy-outs, relocation assistance, rental assistance, public services

Low-Moderate Income Areas in Lexington County



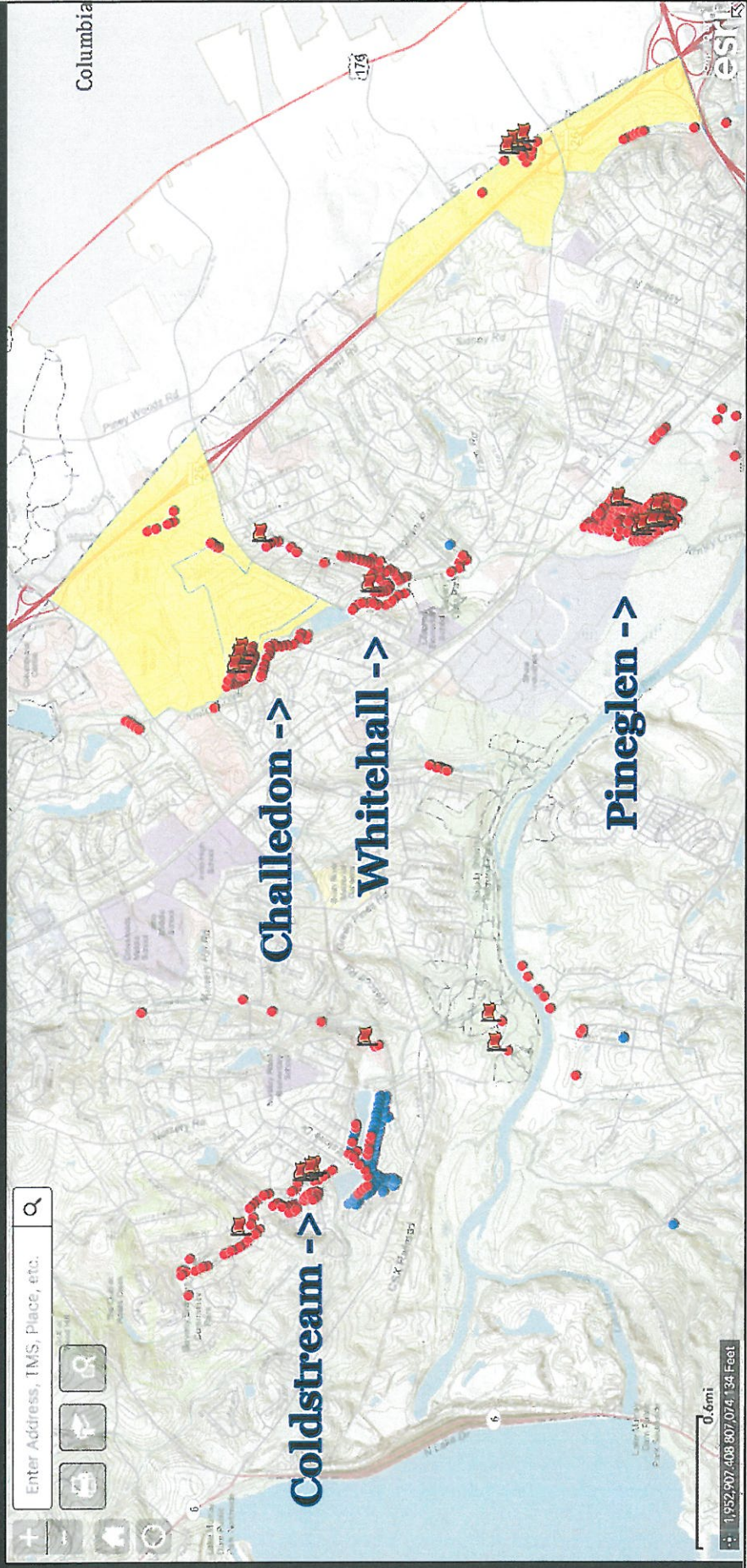
LMI Areas with Storm Impact



High Impact Areas



Flood 2015 Impact Viewer Map Lexington County, SC

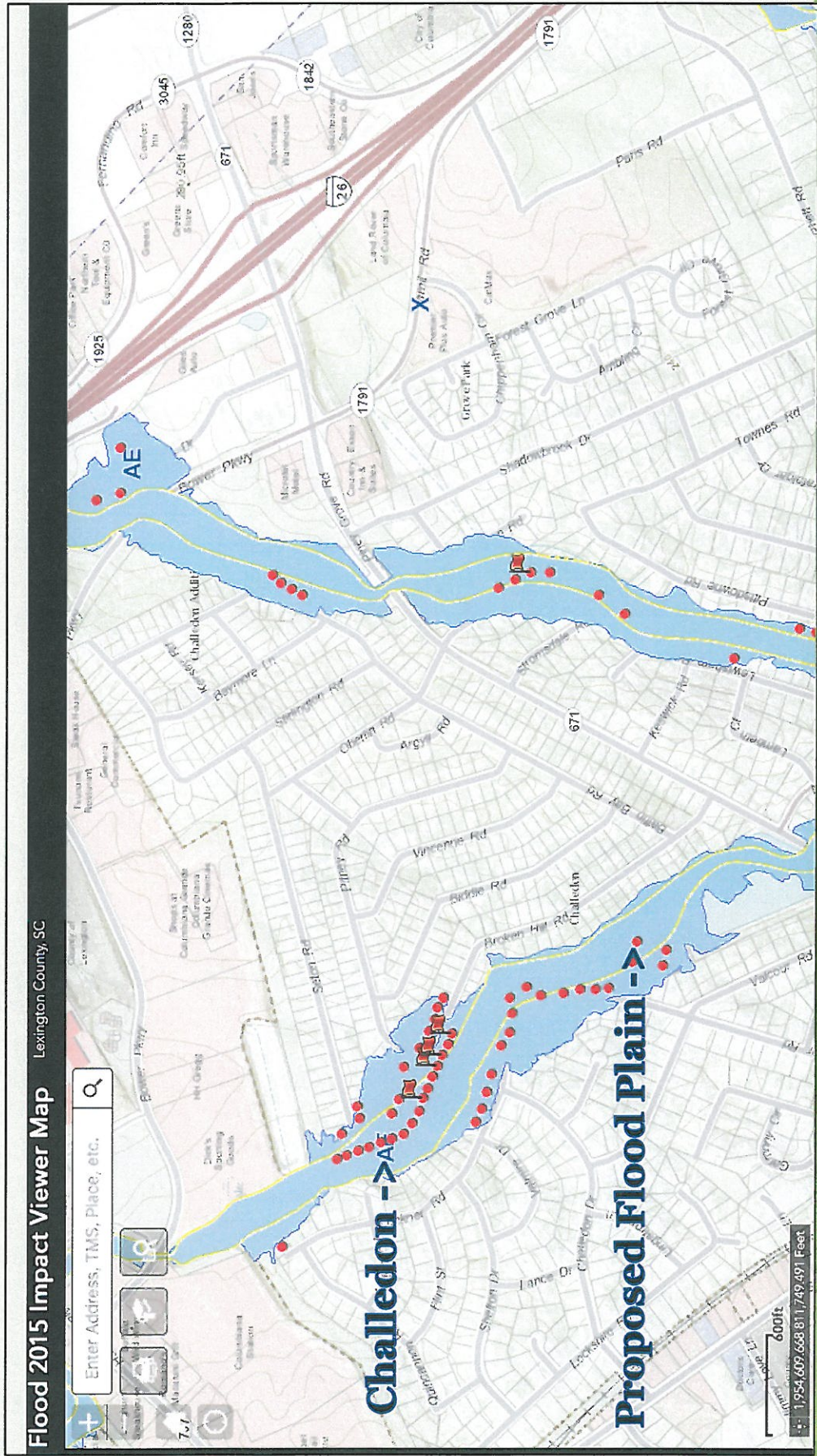


High Impact Neighborhoods



- **Challedon 66% LMI** (qualifies for LMI Area Benefit)
- **Pineglen 46% LMI** (does not qualify for LMI Area Benefit)
- **Coldstream 27% LMI** (does not qualify for LMI Area Benefit)
- **Whitehall 10% LMI** (does not qualify for LMI Area Benefit)

Challedon

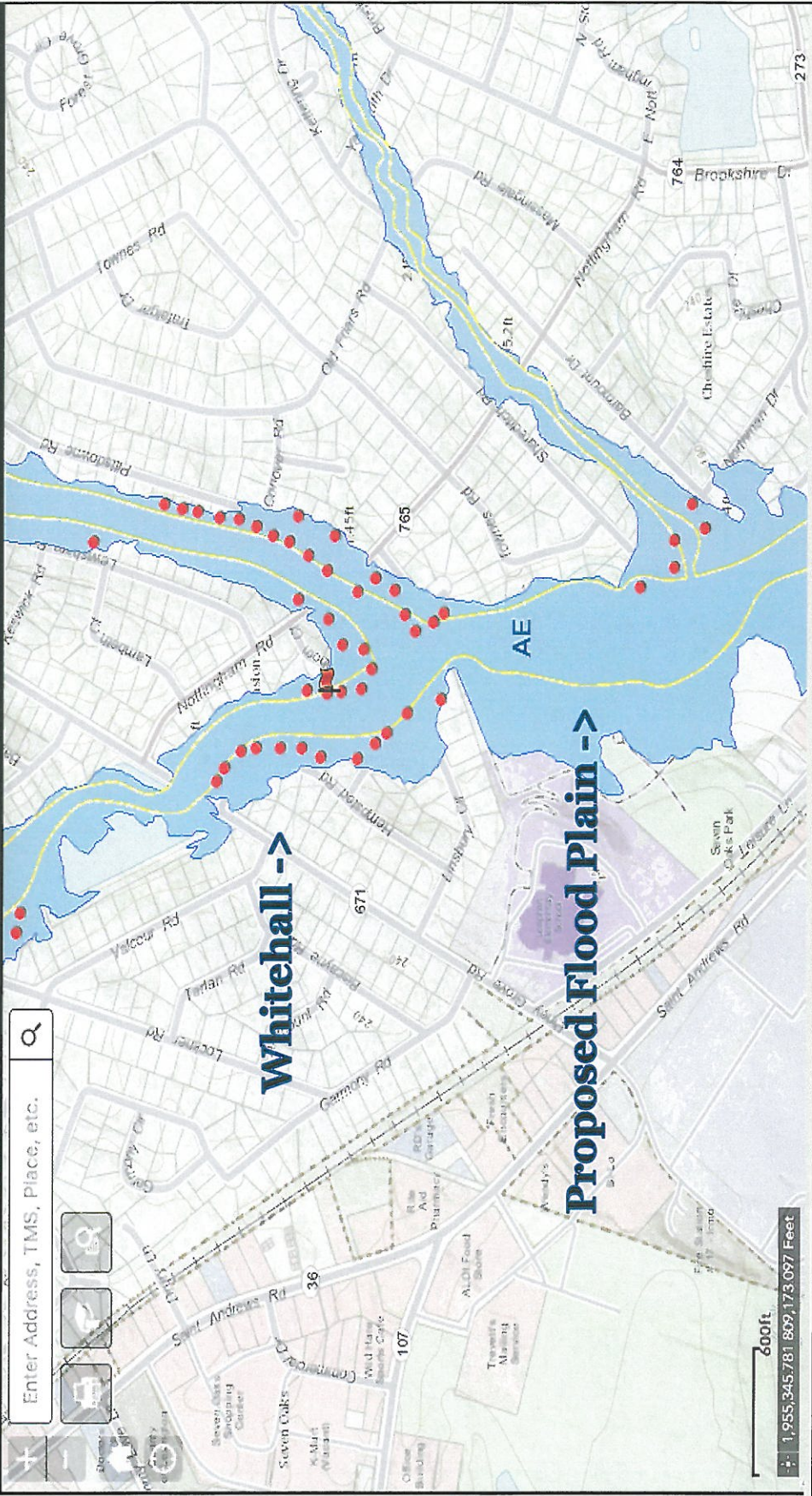


Whitehall

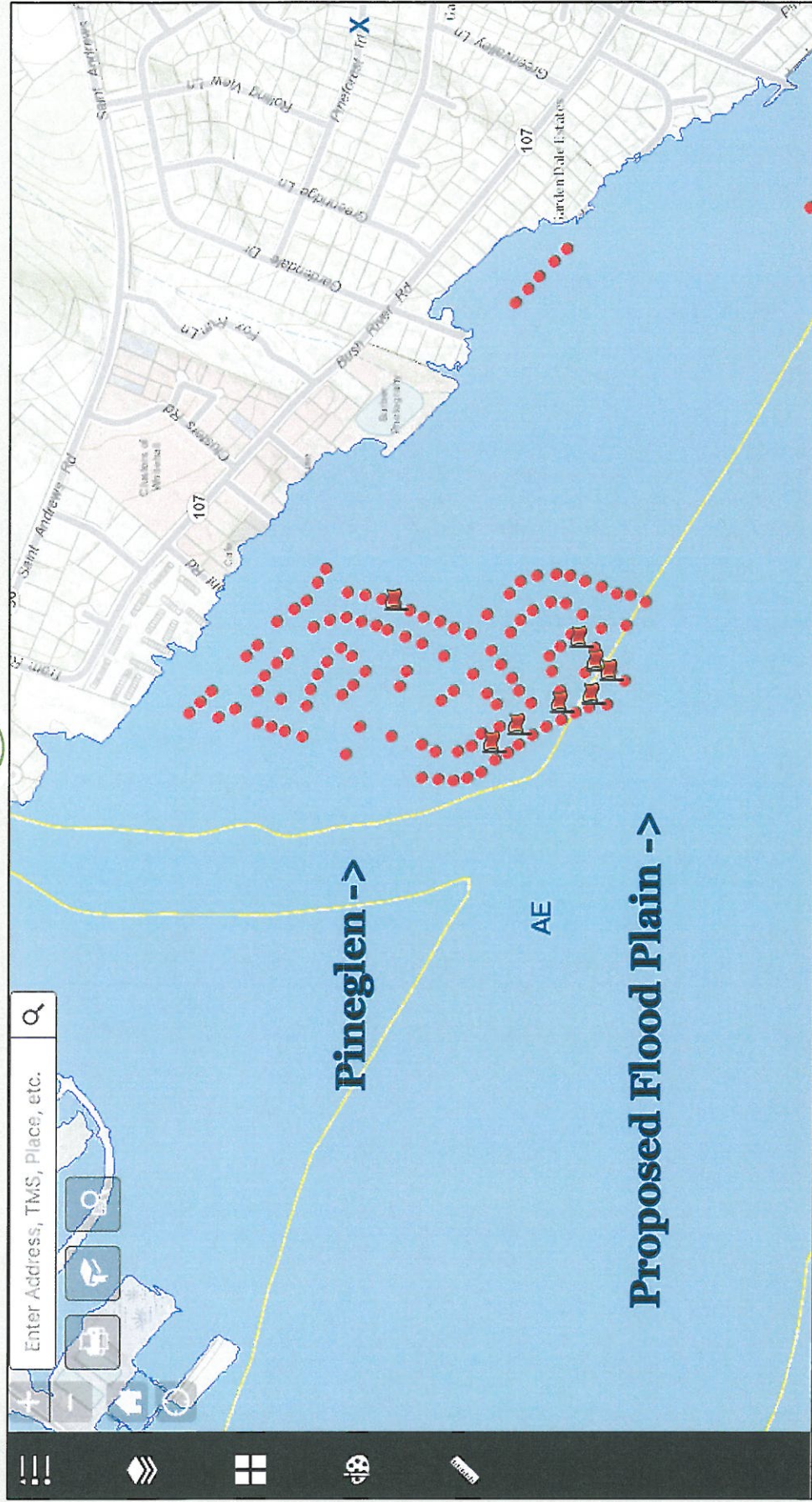
Flood 2015 Impact Viewer Map

Lexington County, SC

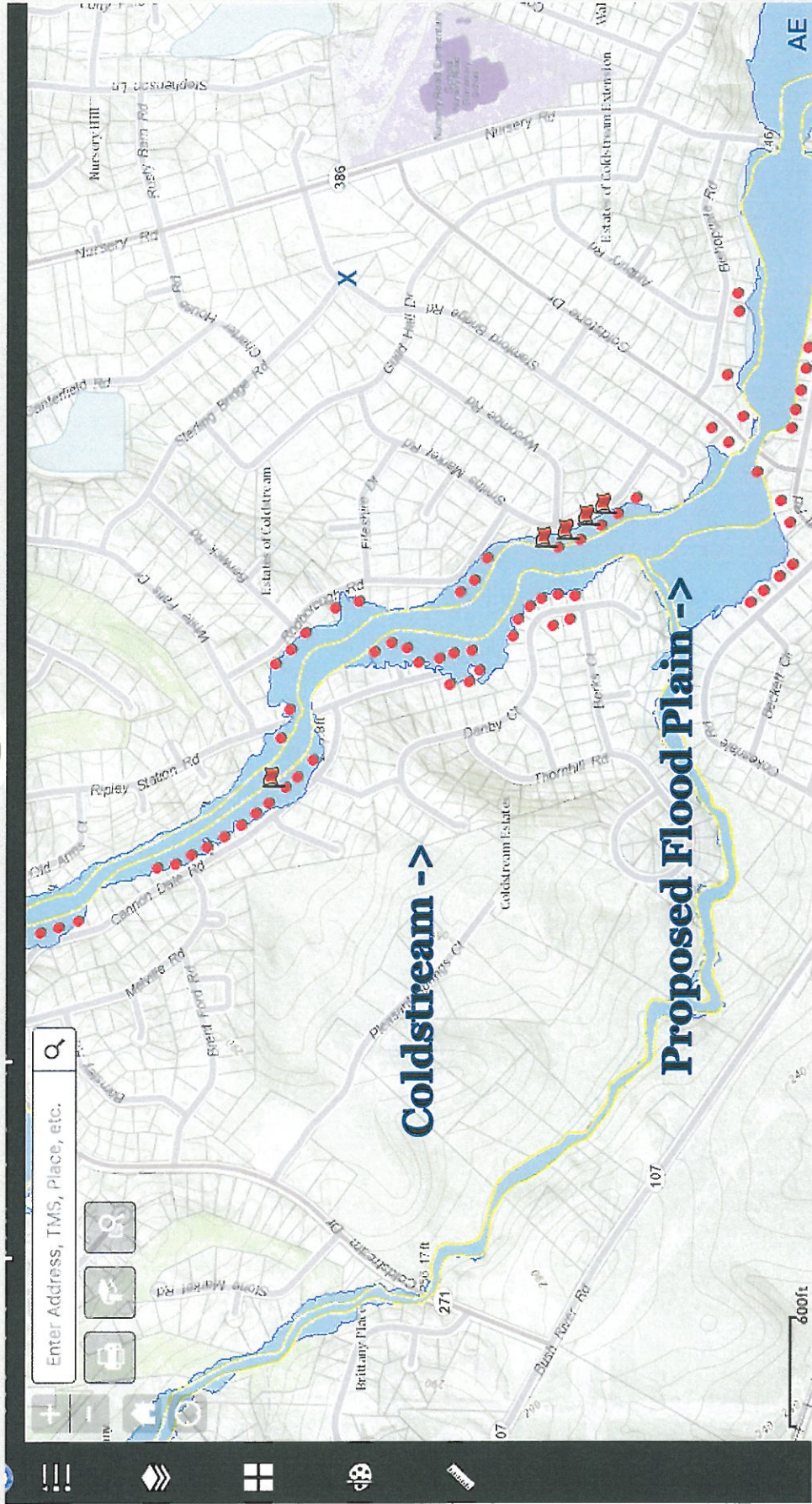
Enter Address, TMS, Place, etc.



Pineglen



Coldstream



What do we want for Lexington County?



What do we want for Lexington County?



What do we want for Lexington County?



What do we want for Lexington County?



What do we want for Lexington County?



What do we want for Lexington County?



Program Funding Recommendation



Program	Allocation	Percentage of Funding	Households Served
Administration	\$816,600	5%	N/A
Planning	\$1,400,000	8.6%	N/A
Roads & Public Infrastructure (LMI Areas only)	\$3,000,000	18.4%	TBD
Targeted Buy-outs (Chalcedon)	\$6,000,000	36.7%	30
Countywide Rehab (LMI Household Preference)	\$4,750,000	29.1%	86
Countywide Minor Rehab (all incomes)	\$365,400	2.2%	15
Totals	\$16,332,000	100%	131 +

What's Next



- *Implementation Plan* due to HUD by July 21st
 - Capacity Assessment & Staffing Plan
 - Financial & Programmatic Controls
 - Certifications
- *Action Plan* due to HUD by September 20th
 - Unmet Needs Analysis
 - Funding Allocation Plan
 - Citizen Participation & Input
 - Public Hearing & Council Approval
- *Program Opens* in October

Additional Considerations



- Six (6) years to spend all of the funds
- Action Plan can be amended
- If we are unable to meet 70% LMI set-aside, we can request a waiver. If approved, the LMI set-aside would likely only be 50% thus opening the program to a wider range of households.

Questions?



LEXINGTON COUNTY COUNCIL
JUNE 28TH, 2016

County of Lexington, SC -
Community Development Department
212 S. Lake Drive, Suite 401
Lexington SC 29072

803-785-8121

disasterrecovery@lex-co.com

www.lex-co.com